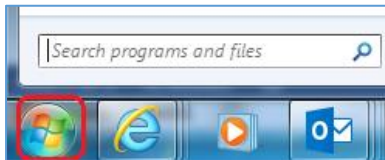
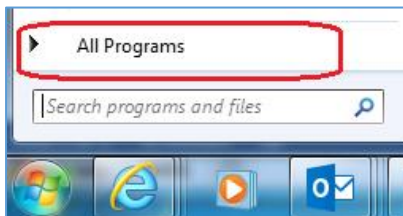


Starting Health Link Application in NT Service mode

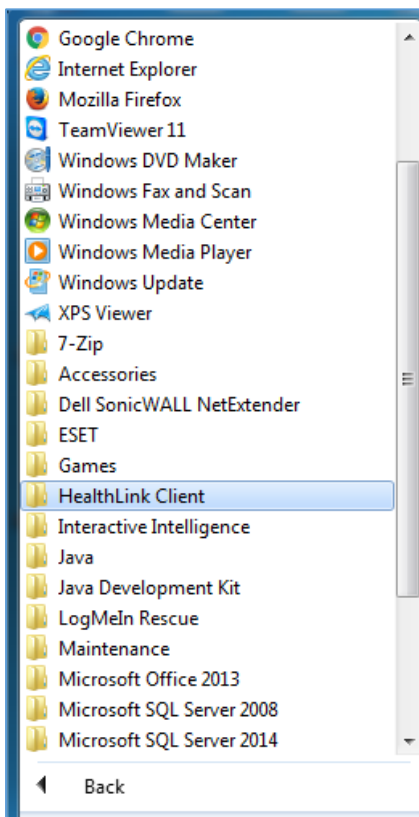
- Login to any machine which has Health Link configured. (If you are unsure check with your IT)
- Click on Start or Windows icon on the bottom left on your screen



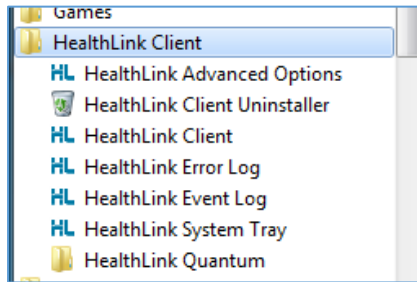
- Then click on All Programs



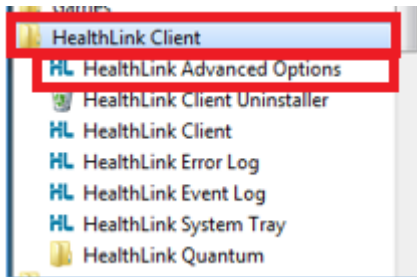
- Then click on Health Link Client



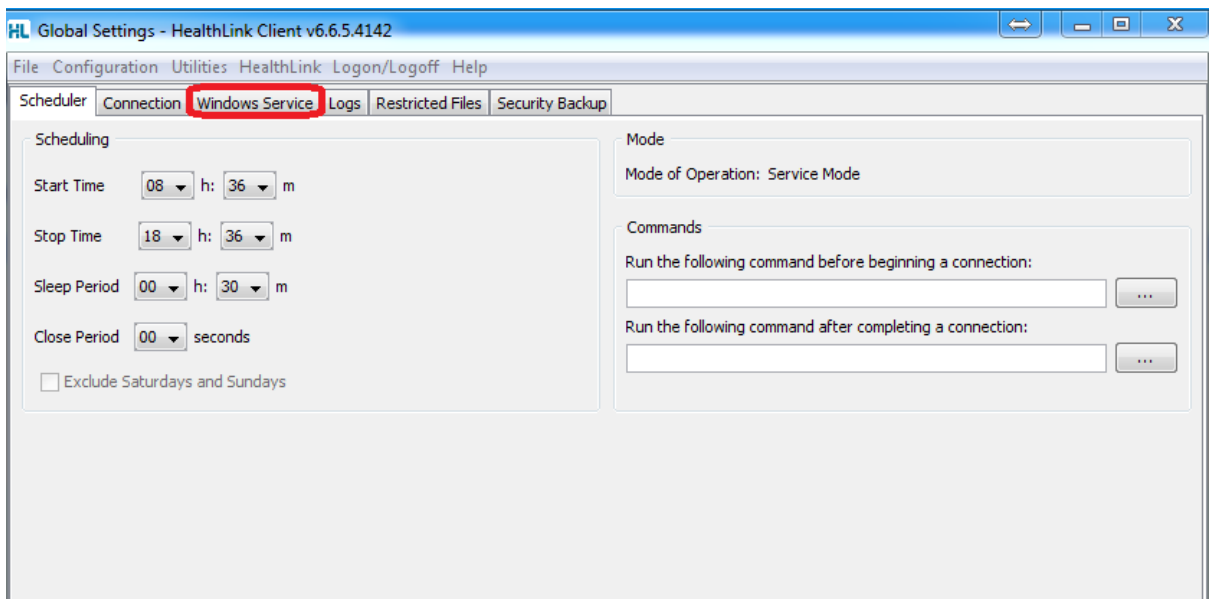
- Double click to open Health Link client folder



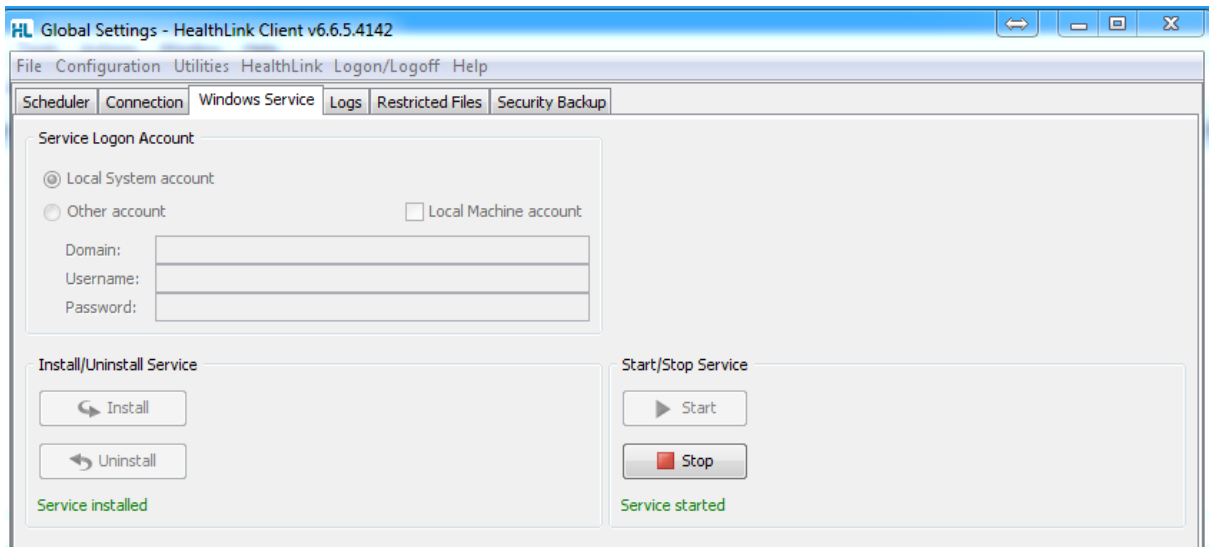
- Double click on Health Link Advanced Option



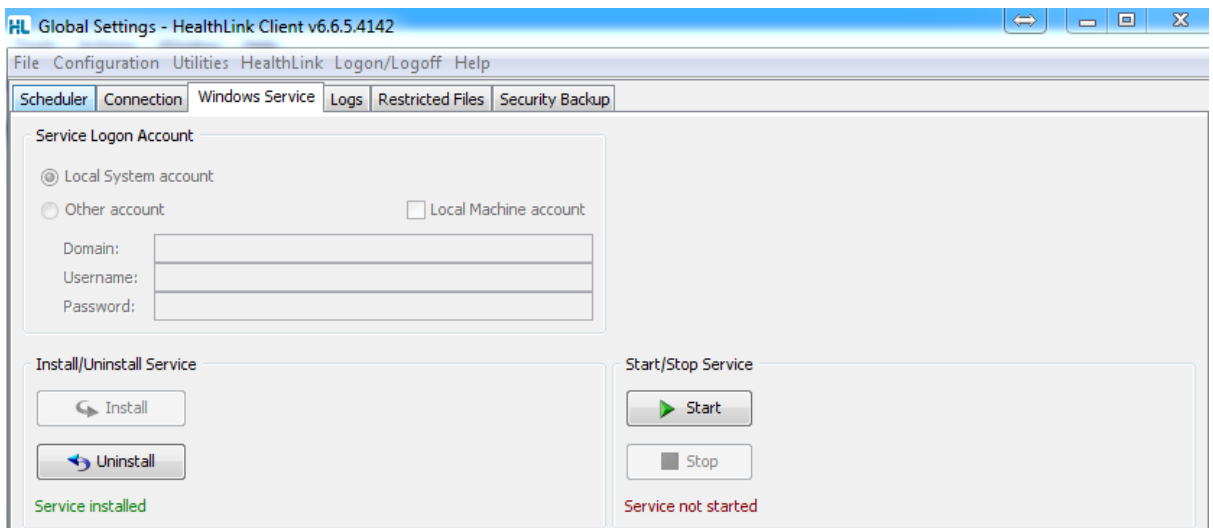
- Click on Windows Service tab



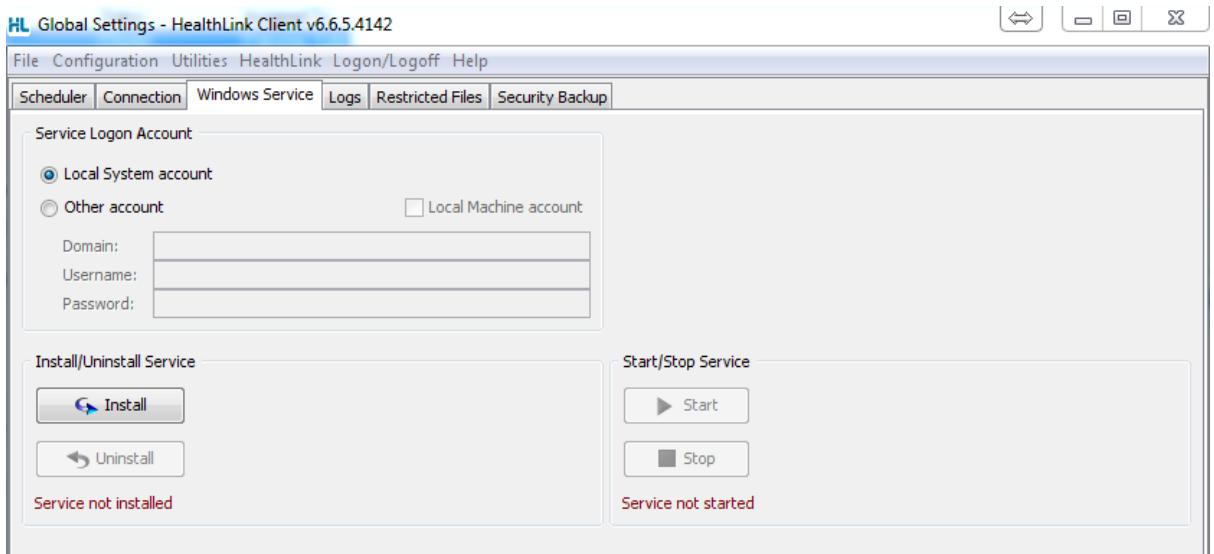
- Click on Stop



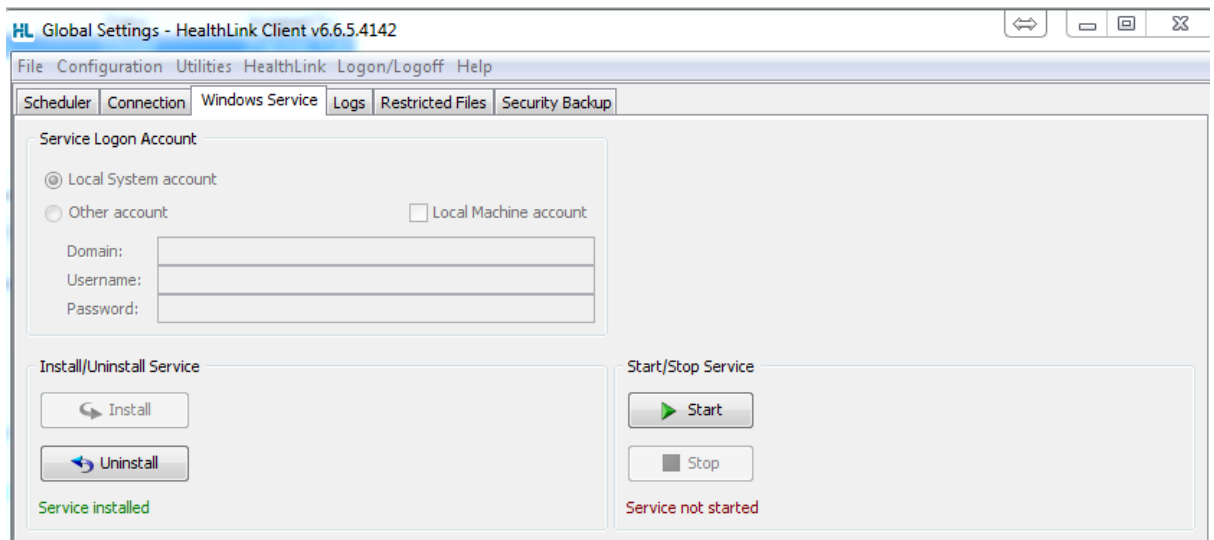
- Click on Uninstall



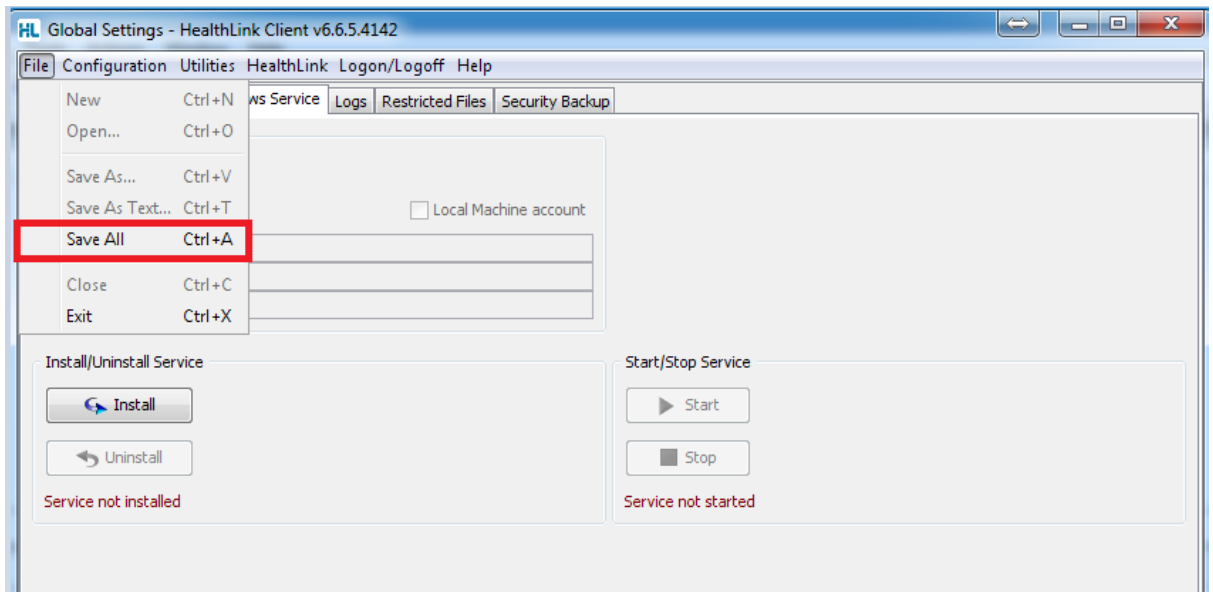
- Click on Install



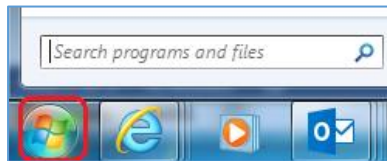
- Click on Start



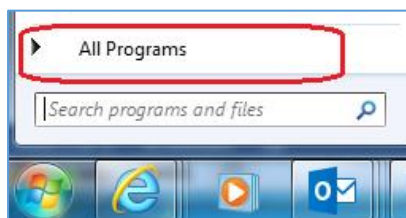
- Click on File and Save All



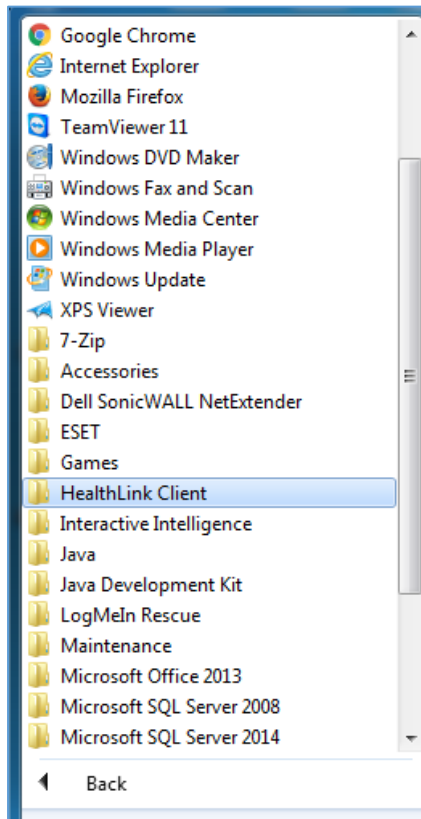
- Click on Start or Windows icon on the bottom left on your screen



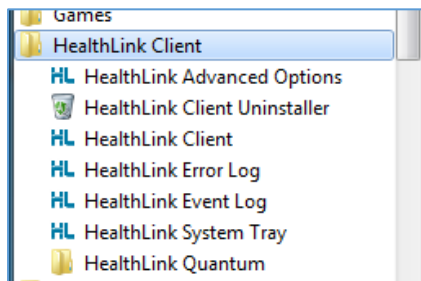
- Then click on All Programs



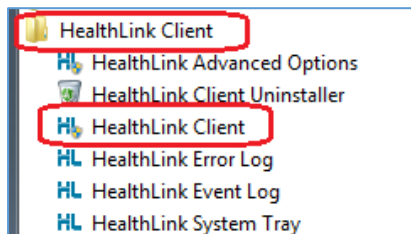
- Then click on Health Link client



- Double click to open Health Link client folder



- Double click on Health Link client application



- The below window will open – Health Link is now running successfully

